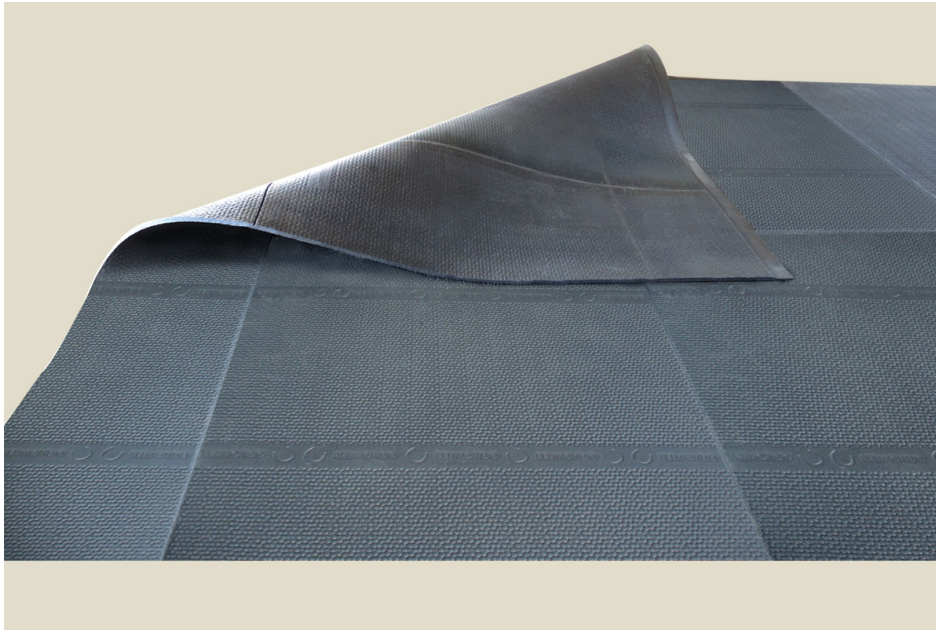


Comfort without joints

When using BELMONDO® Kingsize Cover, jointless large areas of up to 5.25 × 6 m can be covered. The large area flooring is heat insulating and improves sure-footedness when getting up and lying down. It is suitable for looseboxes and lying areas (e.g. in open stables). Moreover, it is compatible with vehicle traffic, e.g. with standard equipment such as a farm yard loader or tractor. Bedding, dust, manure and effort for maintenance are reduced significantly.



- Jointless areas of up to 5.25 × 6 m can be covered
- Horse-friendly soft
- Vulcanized rubber is impermeable to water



BELMONDO® Kingsize Cover: Technical data

Dimensions	Thickness	Width	Length
	15 mm	262 / 348 / 440 / 525 cm	250 - 600 cm in 10-cm increments

Installation

BELMONDO® horse mats can be simply installed on any paved ground. Normally, fixing the mats to the floor is not necessary (floating installation method).

[Installation instructions](#)

Suitable for every type of shoe.

Compatibility with vehicle traffic

BELMONDO® Kingsize Cover is compatible with vehicle traffic, e.g. farm yard loader or tractor with authorized pneumatic tires for recommended inflation pressure up to max. 2.5 bar. (Note: Drive with the necessary caution and ensure adequately large turning radii!)

[Vehicle traffic specifications](#)

Maintenance tip

To bind liquids, a small amount of absorbent bedding is always required. The actual amount required depends on the type of bedding, the individual behavior of the horse and the stable climate.

Treatment with a high-pressure cleaner and standard cleaning agents possible.

Optional accessory: VITA Top	Height	Width	Length
Covering strip as optical border towards the wall	5 cm	5.5 cm	200 cm

Installation VITA Top

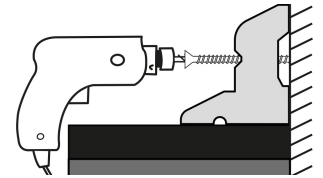
Installation on the wall:

Fix every 40 cm in the position groove

KRAIBURG fixings:

Spax screws $\varnothing 5 \times 60$ mm (are supplied)

If required, use suitable plugs for the type of wall.



Tolerances

Thickness: +3/-2 mm

Width + length: +/- 1,5 % (DIN ISO 3302-1 tolerance class M4)

Please refer to the relevant KRAIBURG specifications and installation instructions, which provide valuable hints and tips.

More technical details on request. The products featured here are exclusively intended for the demonstrated applications. Technical details subject to change. Our General Terms and Conditions apply. Legal basis is the German version of the document.